

# Kodlidalen B14 Bolig 1

BRA: 163 m<sup>2</sup>

P-rom: 153 m<sup>2</sup>

Tomt: Ca. 387 m<sup>2</sup>

3(4) Soverom

3 Stuer

3 Bad

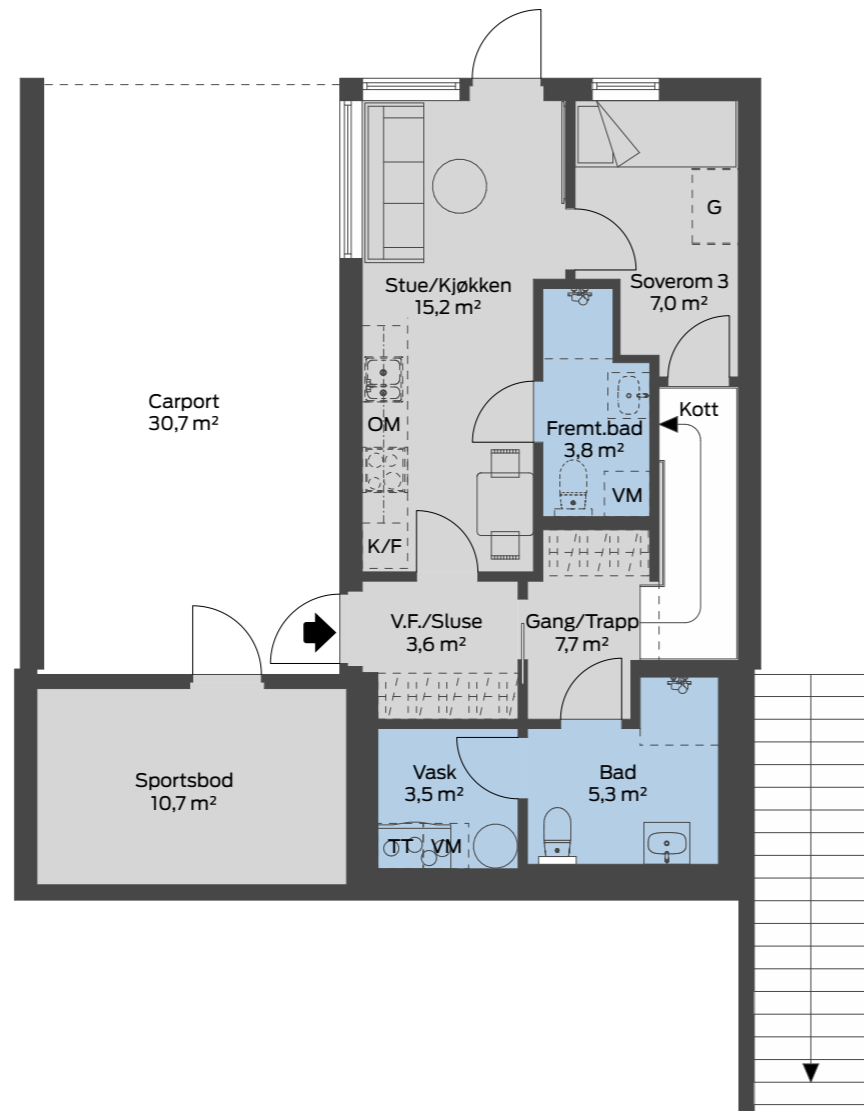
Vaskerom

Kott

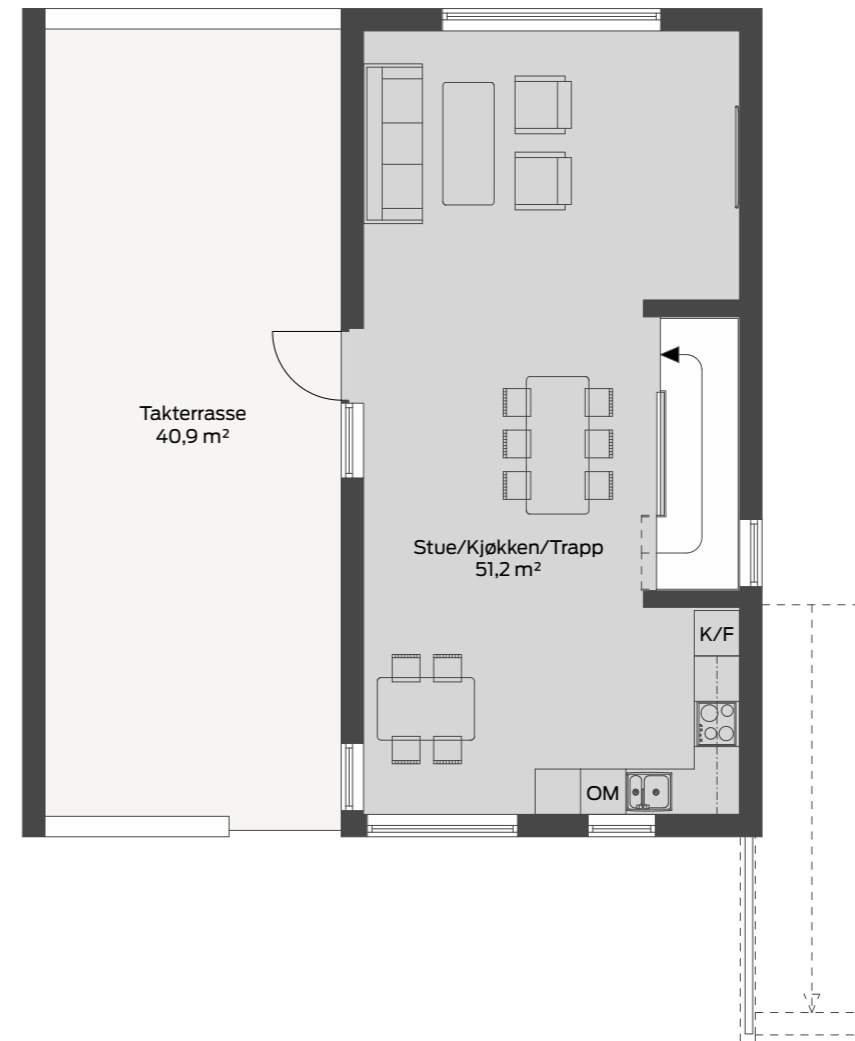
Terrasser

Sportsbod

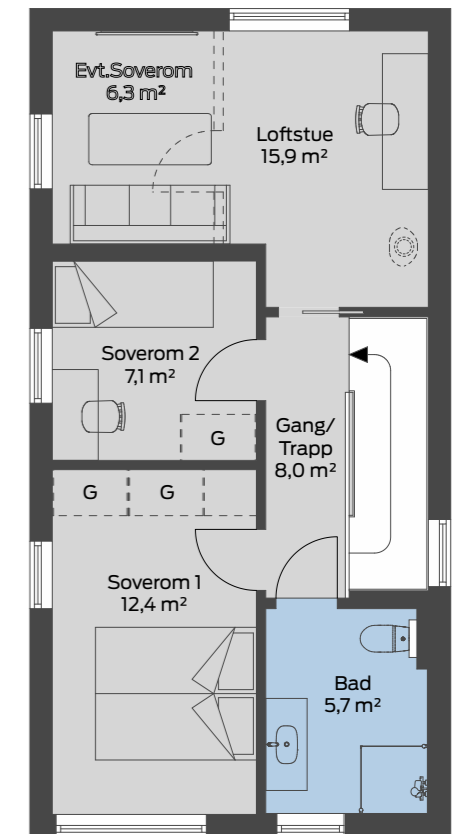
Carport



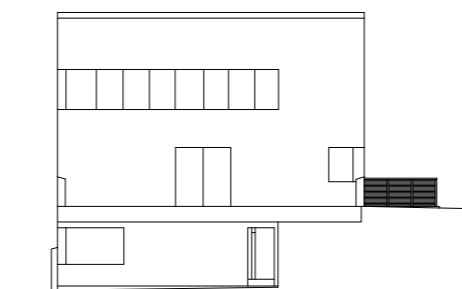
Plan 1



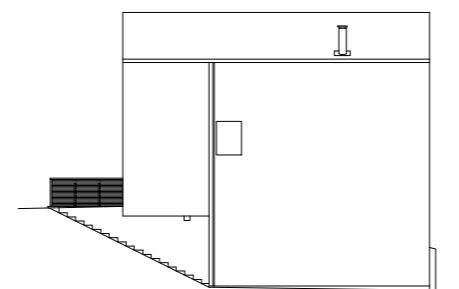
Plan 2



Plan 3



Fasade mot Sør-vest



Fasade mot Nord-øst